

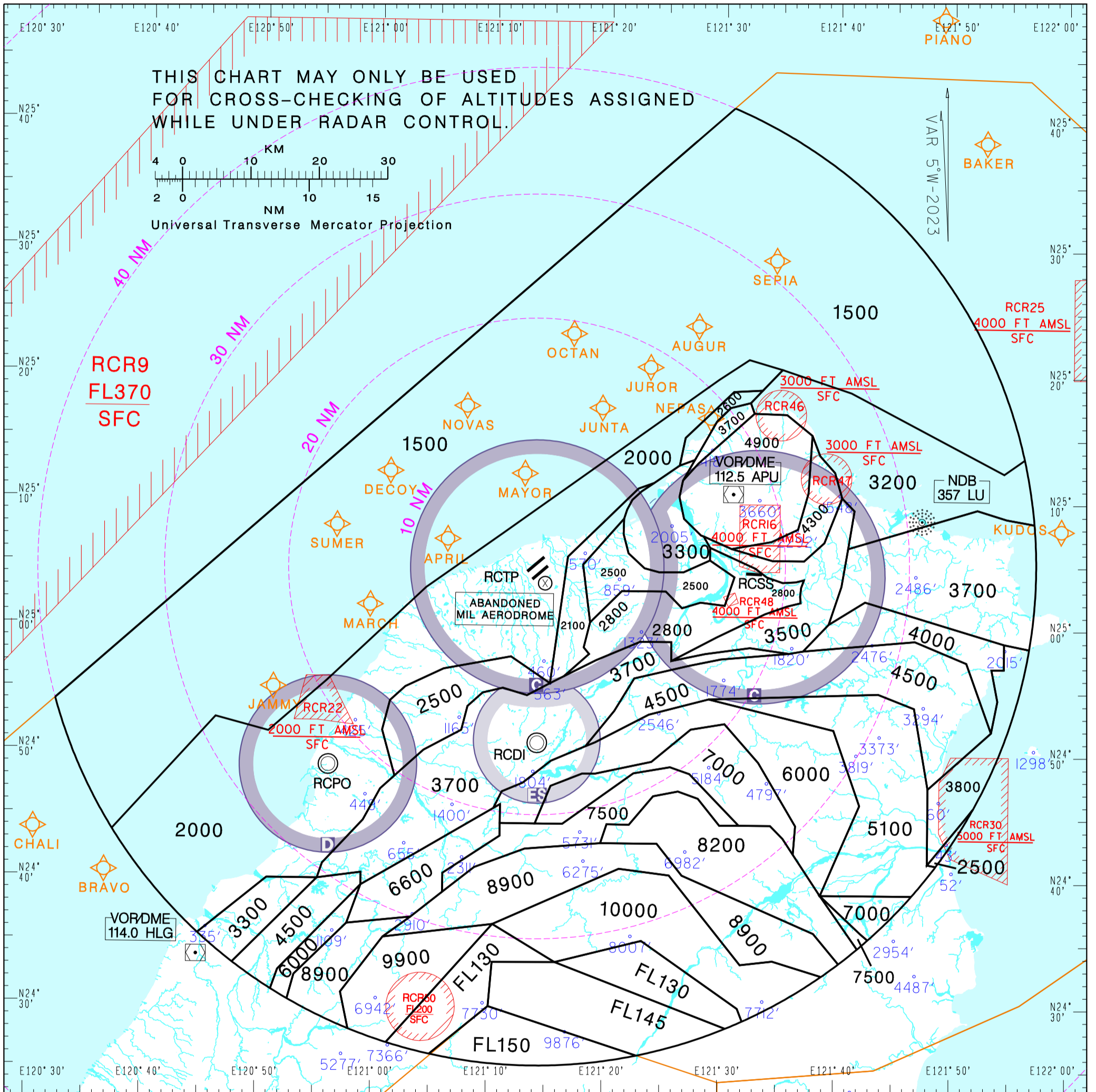
航管監視最低高度圖
ATC Surveillance
Minimum Altitude Chart

AD ELEV.
RCTP 108 FT
Trans Level:FL130
Trans Alt:11,000'

TAIPEI APP	
125.1	124.2 128.5
119.7	119.6
228.0	125.6 251.3

TAIPEI TOWER	
118.7	129.3
236.6	
ATIS	127.6

臺灣桃園國際機場
Taipei/Taiwan Taoyuan International Aerodrome



THIS CHART MAY ONLY BE USED FOR CROSS-CHECKING OF ALTITUDES ASSIGNED WHILE UNDER RADAR CONTROL.

4 0 10 20 30
2 0 10 15
KM
NM
Universal Transverse Mercator Projection

VAR 5°W-2023

NOTE

- Distance circles are centred on RCTP ARP(250449N 1211356E).
- Minimum altitudes are calculated taking into account of minimum clearance above terrain/obstacles. Radar control service cannot be provided to aircraft below the applicable minimum. Aircraft at designated altitude in relevant sector is not assured of radar contact.
- Altitudes, Levels, Heights are in feet.
- Only significant spot heights are shown.
- LOSS OF COMMUNICATION
 - SQUAWK 7600 immediately, and
 - follow AIP ENR 1.6.4 "Radio Communication Failure Procedures."

CHANGES: RECHART